

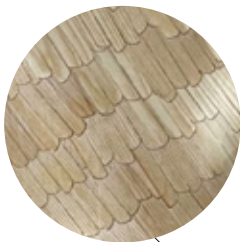
strong by form

Woodflow · ski

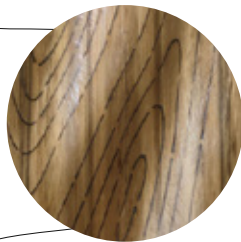
Natural cutting-edge interiors, made effortless and sustainable.

Woodflow-skin is freeform interior cladding, meticulously tailored to your design vision. Whether you seek intricate shapes, distinctive textures, or innovative patterns, we create surfaces that perfectly align with your aesthetic goals while championing sustainability and efficiency.

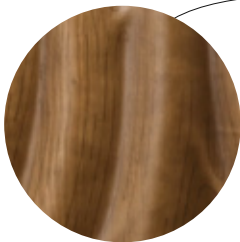
With Woodflow-skin, your interiors can strike the perfect balance of form and function, creating a unique and environmentally responsible space that reflects your unique style.



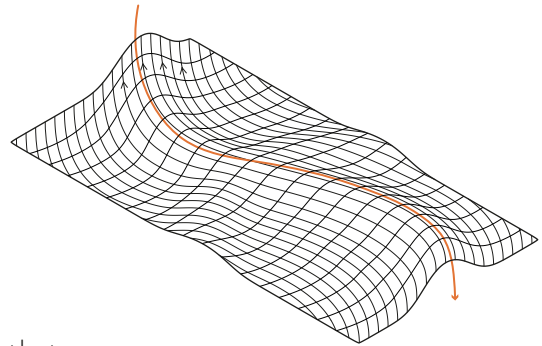
Play with wood fibers that flow with your shapes



Or create surfaces that resemble solid wood



Craft a shape that embodies the luxury, uniqueness, and sustainability of your space



Sustainable design

Choose a friendlier, more efficient material with Woodflow-skin. Made from **88% wood** and just **3mm thick**, it's both lightweight and recyclable, **weighing only 3.4 kg/m²**.

Compared to concrete, fiberglass, or solid wood alternatives, Woodflow-skin offers a more sustainable choice that doesn't compromise on quality or performance.



Seamlessly automated cladding, from design to assembly.

Our advanced digital design and fabrication tools ensure translating the shapes you envisioned into smart structures that feel natural, elegant and strong.

- ① **Visualize Your Vision**
Explore a Woodflow-skin model tailored to your design—no specialized modeling skills needed.
- ② **Select Your Materials**
Choose from a variety of wood species and textures.
- ③ **Efficient Manufacturing**
We'll take care of the production process, bringing your design to life.
- ④ **Simple Delivery and Assembly**
Receive your finished product along with comprehensive documentation and easy-to-follow assembly instructions.



Woodflow-skin website
info@strongbyform.com

Design examples

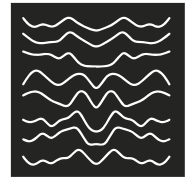


Lighting can dramatically enhance the visual impact of your space when combined with Woodflow-skin's 3D freeform shapes and intricate patterns. The interplay of light and texture creates stunning effects, transforming any interior into an elegant, innovative environment.



Sample: Bark / Finishing: Dark Ash

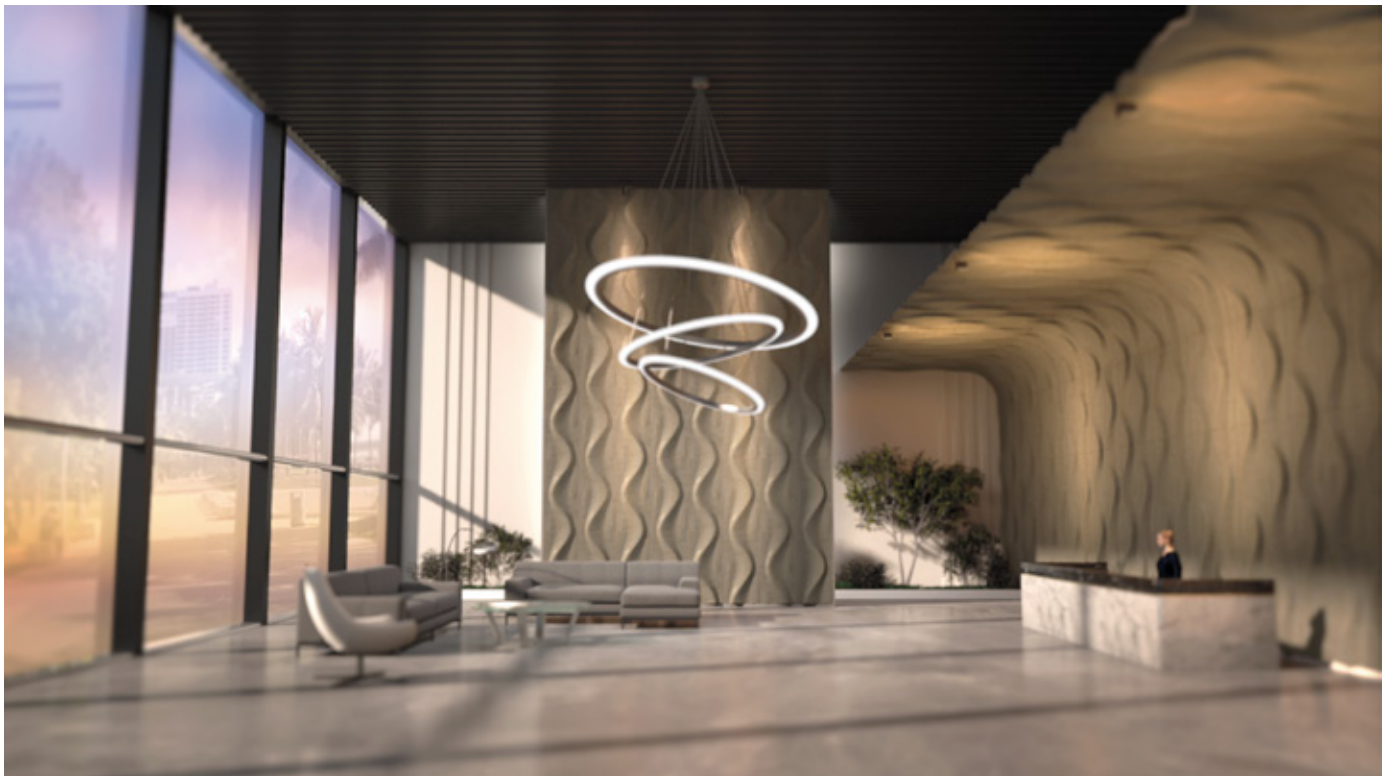
Imagine your environments



strong by form



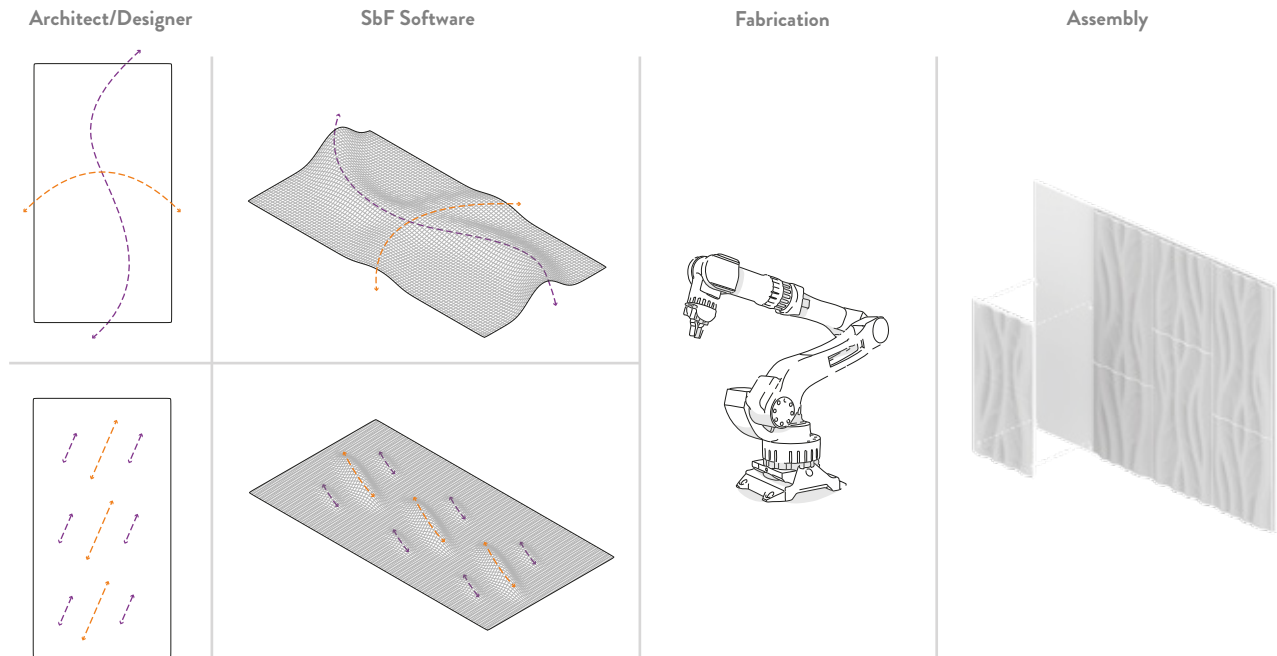
Whether you're aiming to craft an impressive lobby, create a warm and inviting atmosphere in a conference room, or make a bold statement with an exclusive and captivating interior, Woodflow-skin brings your vision to life with unparalleled elegance and precision.



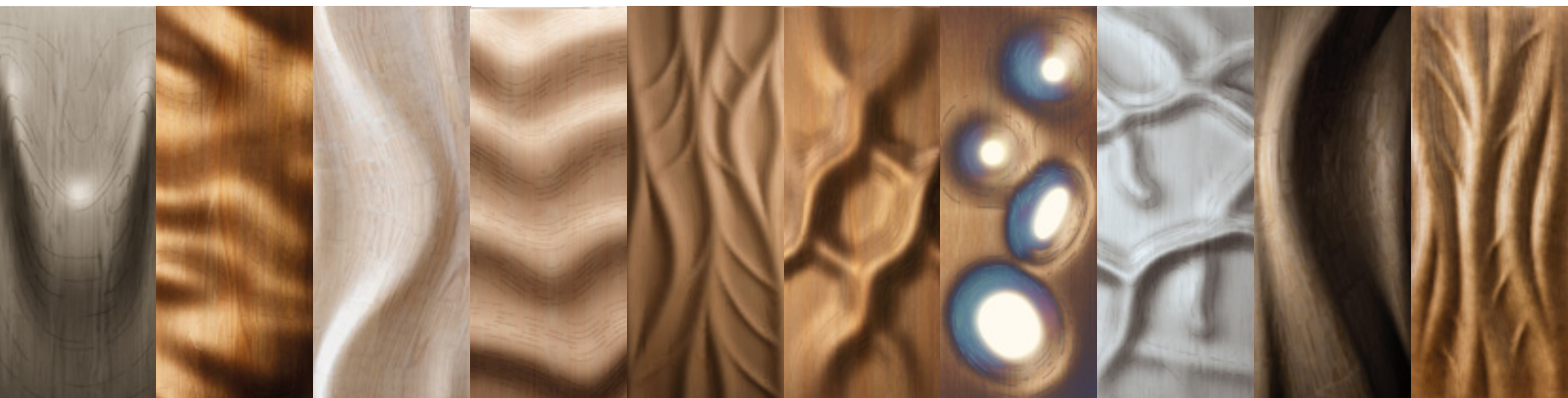
Imagination is the only limit, bring your ideas to life with Woodflow-skin and transform your space into something truly extraordinary.

Design-To-Manufacturing

We craft distinctive patterns for each unique client by meticulously tailoring the geometry, fiber architecture, surface texture, and finish. Our design-to-manufacturing process ensures that every aspect of Woodflow-skin is customized to reflect your vision, creating truly one-of-a-kind installations that blend innovation, sustainability, and unmatched craftsmanship.



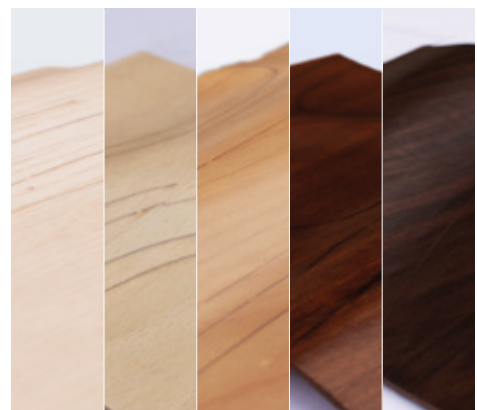
Endless design possibilities



Product specifications

Panel Dimensions	2700 x 1200 mm max.
Shell Thickness	3 - 6 mm
Shell Depth	Up to 70 mm
Shell Material	~90 % Wood ~ 10 % Binder multiples species
Frame Material	5.5 mm MDF
Fixing Method	Button Fix "Snap in"
Surface Pattern	Oriented, smooth
Finishing	Tinted or clean coating
Weight	3.6 kg/m ²

Finish samples





strong by form

CONTACT US

Strong by Form

info@strongbyform.com

www.strongbyform.com